

For Sub-Lease

- Available Unit:

SECOND FLOOR

Suite 202

3,661 r.s.f.

\$10.35 NNN

(NNN = \$8.28)

- FHA by gas heat
- Municipal water and sewer
- Located next to International Marketplace
- Great access to all highways!
- Handicapped accessible
- Ample parking
- Common Area Factor: 18%+/-
- Availability negotiable

30 International Drive Pease International Tradeport Portsmouth, NH 03801



This class B office space is located near the entrance to Pease next to the International Marketplace and TD Bank. Great exposure and location near the Spaulding Turnpike and Interstate 95. This large second floor space has lots of windows plus a kitchenette and is currently occupied by Crotched Mountain Community Care ("CMCC") through December 31, 2017, but CMCC is seeking to downsize to a first floor rent.

For additional information, please contact:

Rebecca A. Lee or David F. Choate, III

ral@grubbellisne.com ♦ dfc@grubbellisne.com

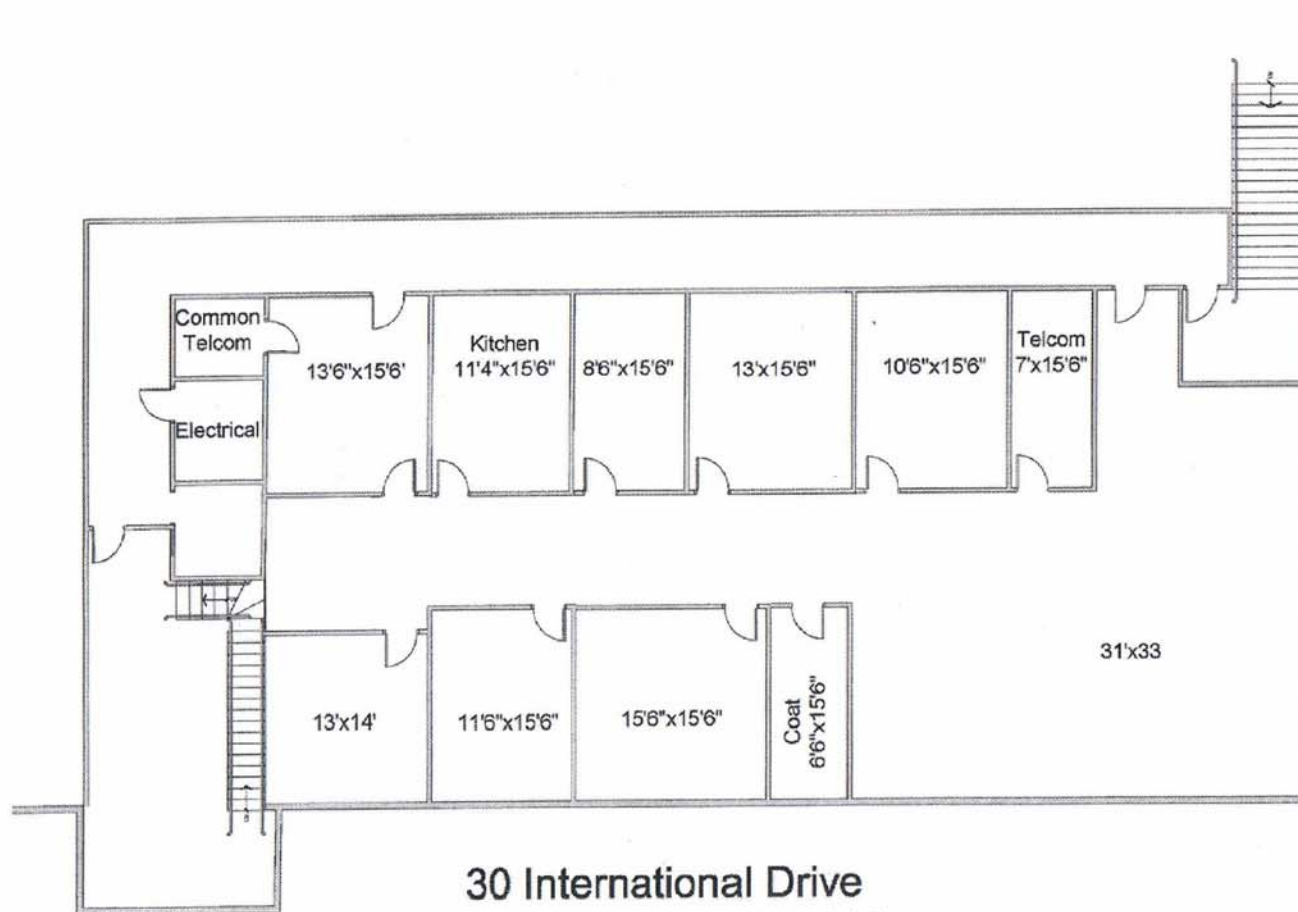
500 Market Street, Suite 9 ♦ Portsmouth, NH 03801

603.433.7100 ♦ Fax 603.431.0028



GRUBB & ELLIS.
Northern New England

www.grubbellisne.com



30 International Drive
 Second Floor Suite 202



GRUBB & ELLIS.
 Northern New England